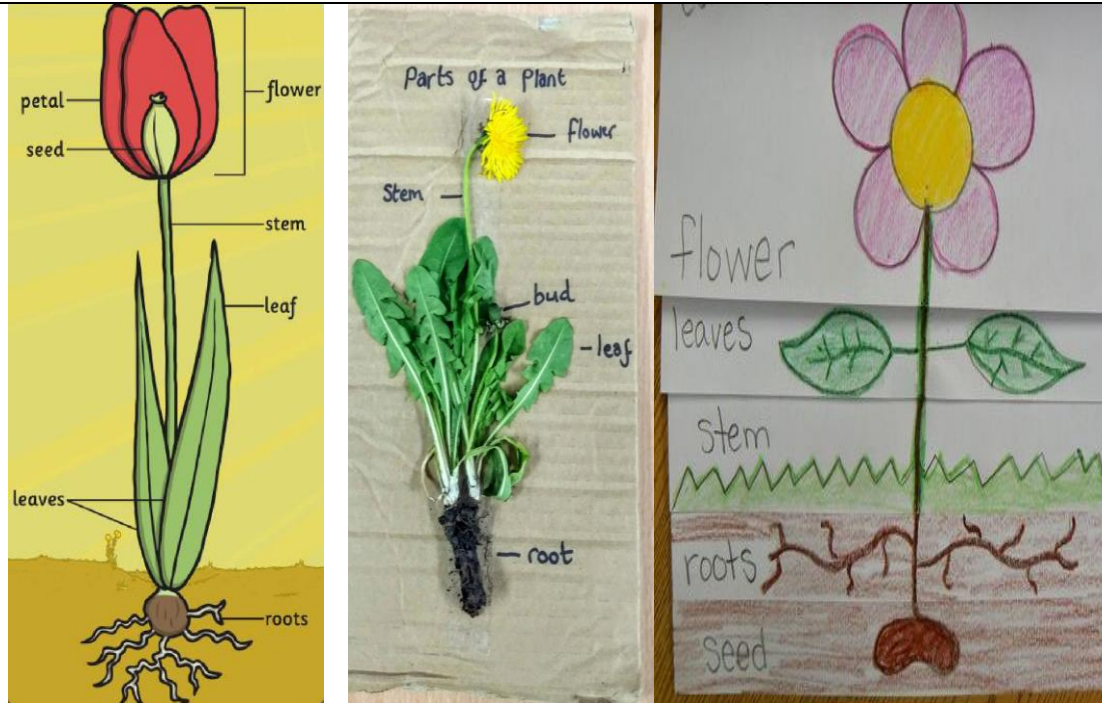


## Key Stage 1 - Forest Academy Knowledge organiser - Plants and Trees

### Know how to...

- observe and describe how seeds and bulbs grow into mature plants
- find out and describe how plants need water, light and a suitable temperature to grow and stay healthy
- to identify and describe the basic structure of a variety of common flowering plants, including trees.



### What do plants need to stay healthy?

#### What Does a Plant Need to Grow?

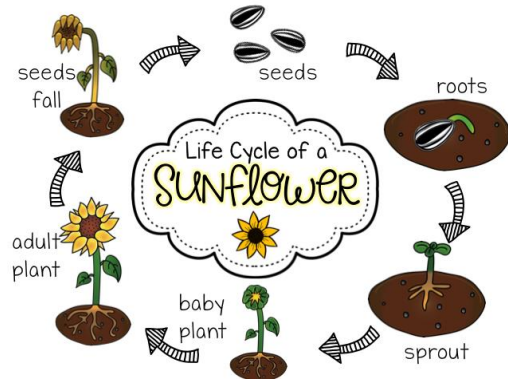


### Key Vocabulary



<b>branches</b>	parts that grow out from the tree trunk and have leaves, flowers, or fruit growing on them
<b>bulb</b>	a root shaped like an onion that grows into a flower or plant
<b>deciduous</b>	a tree that loses its leaves in the autumn every year
<b>evergreen</b>	a tree or bush which has green leaves all the year round
<b>flower</b>	the part of a plant which is often brightly coloured and grows at the end of a stem
<b>leaf / leaves</b>	the parts of a tree or plant that are flat, thin, and usually green
<b>petal</b>	thin coloured or white parts which form part of the flower
<b>plant</b>	a living thing that grows in the earth and has a stem, leaves, and roots
<b>roots</b>	the parts of a plant that grow under the ground
<b>seed</b>	the part of a plant that will grow into a new plant/ or shoot
<b>grow</b>	to become bigger
<b>germinate</b>	when a seed forms a small root and/or shoot
<b>produce</b>	to make
<b>reproduce</b>	to make more animals and plants
<b>stem</b>	the thin, upright part of a plant on which the flowers and leaves grow
<b>tree</b>	a tall plant that has a hard trunk, branches, and leaves
<b>trunk</b>	the large main stem from which the branches grow
<b>weed</b>	a wild plant that grows in garden and prevents the plants that you want from growing properly

## Seeds and Bulbs



## Inside a bulb

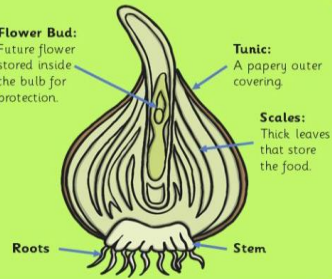
Some plants grow first from a seed, and then develop a bulb that helps them to grow back year after year.

A bulb lets the plant rest underground over the winter when it is too cold, then grow back later in the year when conditions are right.

**Flower Bud:** Future flower stored inside the bulb for protection.

**Tunic:** A papery outer covering.

**Scales:** Thick leaves that store the food.



## Seeds and Bulbs

Here are some common plants that grow from bulbs.

Daffodils, tulips, snowdrops, lilies and allium.



## Common Wild Plants



dandelion



daisy



buttercup



nettles



ivy



dog rose

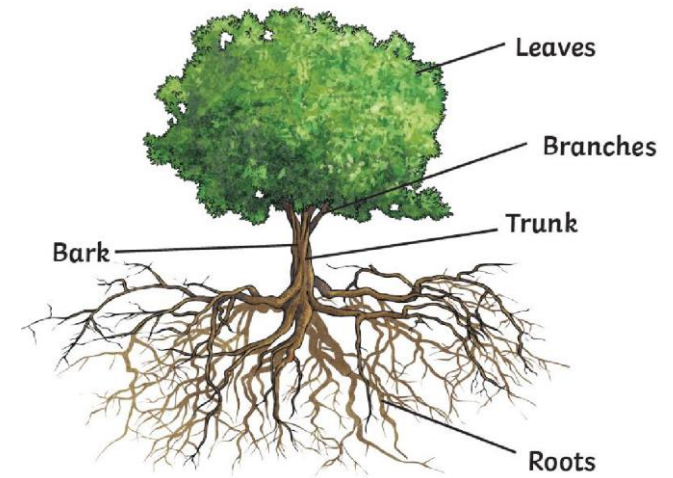


clover



brambles

## Trees



- Deciduous trees lose their leaves in the autumn every year. Their leaves are generally broad, flat and have veins running through them.
- Evergreen trees have green leaves all year round. Their leaves are generally thick, waxy and narrow like needles.



Evergreen



Deciduous

