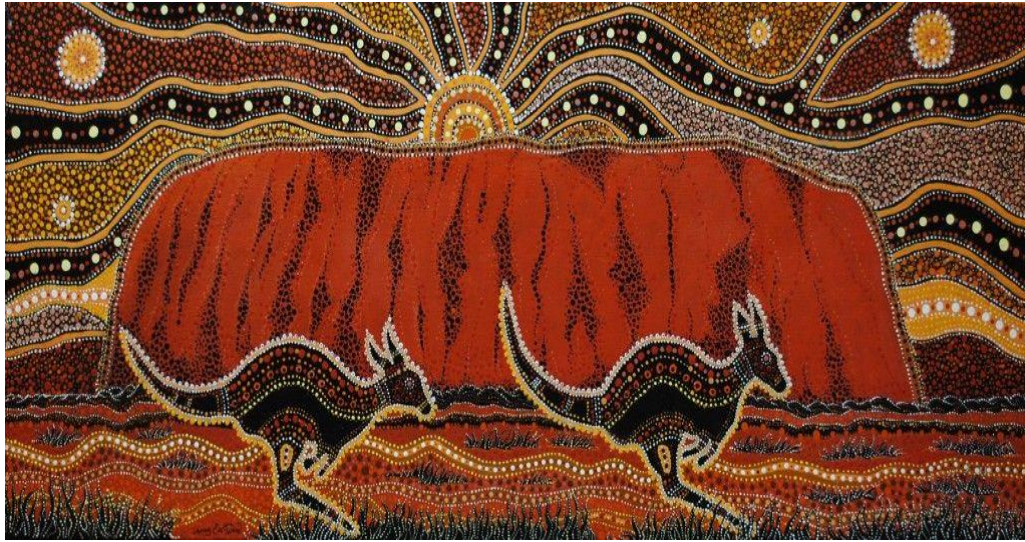


Key Stage 1 - Forest Academy  
Knowledge organiser – Australia

**Know how to...**

- Locate Australia on a map
- Use basic geographical vocabulary to describe physical features
- Understanding geographic similarities and differences through comparing the UK and Australia

Aboriginal Art

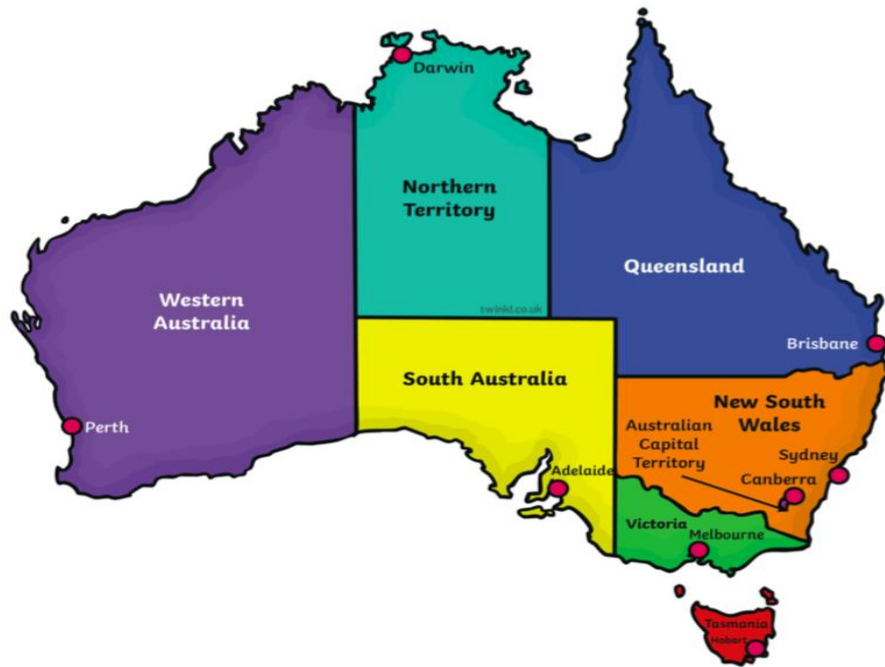


- **Aboriginal** art is art made by the **indigenous** people of Australia.
- It is one of the oldest art forms that is still practised today.
- There is no written language for Australian **Aboriginal** people so in order to tell their stories they used symbols through their artwork.

Key vocabulary

<b>aboriginal</b>	The original people living within a region.
<b>beach</b>	The land at the edge of a lake, ocean, or other body of water.
<b>Canberra</b>	The capital of Australia.
<b>desert</b>	A very dry, sandy area with few or no plants growing in it.
<b>dot painting</b>	A style of Australian Aboriginal painting using coloured dots.
<b>indigenous</b>	Having origin in a country or locality.
<b>lake</b>	A large body of fresh or salt water that is surrounded on all sides by land.
<b>mountain</b>	A land mass with great height and steep sides that is higher than a hill.
<b>river</b>	A large natural stream of water flowing in a particular course toward a lake, ocean, or other body of water.
<b>rock</b>	A solid mass made up of minerals.
<b>states</b>	A territory with its own government and borders within a larger country.
<b>Sydney</b>	The largest city in Australia. It is in the South East of Australia in New South Wales.
<b>Uluru</b>	A large isolated rock. Also known as Ayers Rock.

## Map of Australia



## Christmas in Australia



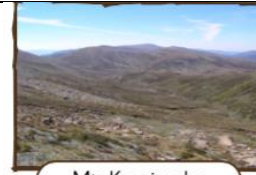
Australia is located in the southern hemisphere. This means that in Australia, Christmas is celebrated in the middle of summer. The hot weather means some aspects of Christmas are very different compared to other, colder countries.

**Food:** As it is very hot, Australians often choose to have a barbeque on Christmas day. Some people choose to eat seafood as part of the Christmas dinner. On Boxing Day, families may go for a picnic.

**Activities:** Australians sometimes go to the beach and go swimming on Christmas day. Instead of making snowmen, they make sandmen on the beach. Some people may also choose to play a game of cricket.

**Santa:** When Father Christmas lands in Australia, he wears a red shirt and shorts as it would be much too hot to wear his thick, furry suit in the Australian summer!

## Physical Features



Mt. Kosciuszko

Mt. Kosciuszko is a type of **mountain**. It is the highest in Australia.



Murray River

Murray River is a type of **river**. It is the longest river in Australia.



Ayers Rock

Ayers Rock is a type of **rock** formation. It is also known as Uluru.



Great Victorian Desert

The Great Victorian desert is a type of **desert**. It is the largest desert in Australia.



Ninety Mile Beach

The Ninety Mile Beach is a type of **beach**. It is the longest beach in Australia.



Lake Eyre

Lake Eyre is a type of **lake**. It is the largest lake in Australia.